

Building Code of Australia – extract

3.7.2.2 - Requirements for smoke alarms

(a) Smoke alarms must be installed in –

(i) Class 1a buildings in accordance with 3.7.2.3; and

(ii) Class 1b buildings in accordance with 3.7.2.4 and 3.7.2.5.

(b) Smoke alarms must comply with AS 3786.

(c) Smoke alarms must be connected to the consumer mains power where consumer mains power is supplied to the building.

3.7.2.3 – Location – Class 1a buildings

Smoke alarms must be installed in Class 1a buildings on or near the ceiling in –

(a) Any storey containing bedrooms

(i) Between each part of the dwelling containing bedrooms and the remainder of the dwelling; and

(ii) Where bedrooms are served by a hallway, in that hallway, and

(b) Any other storey not containing bedrooms.

Diagram 1

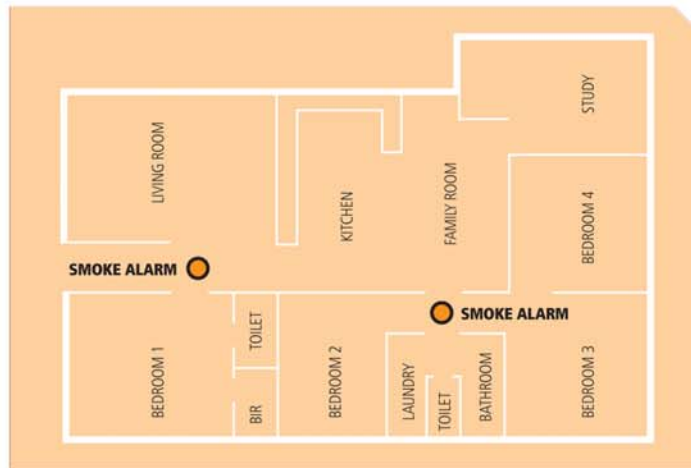
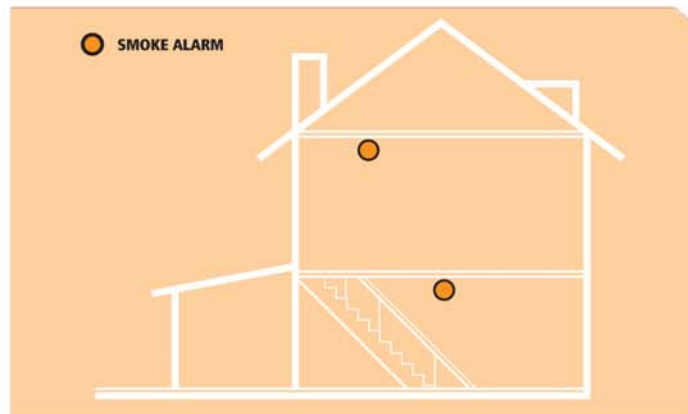


Diagram 2



Locating the smoke alarm away from a dead air space

Smoke alarms should be installed on the ceiling. If it is not possible to fit the smoke alarm on the ceiling, it may be fitted on the wall.

When fitting a smoke alarm near a corner location on the wall, avoid placing it in a dead air space. The corner can create a dead air space that traps hot air and prevents smoke from reaching the smoke alarm. In this case, the smoke alarm must be fitted between 300mm (minimum) and 500mm (maximum) below the ceiling line (see diagram below). For a cathedral ceiling, the smoke alarm must be fitted between 500mm (minimum) and 1500mm (maximum) from the apex.

